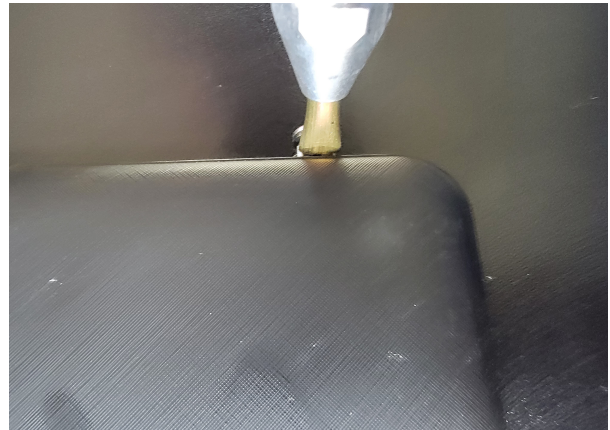


## How to Replace a Missing Magnetic Charge Tip

The tips for our magnetic usb charging cables are meant to stay in place at all times, which will help reduce the wear and tear on a device's charge port. When installing the tips we recommend you place the tip half way into the port then add a small dab of hot glue from a hot glue gun on the back side of the tablet, then insert the tip all the way in. Avoid getting glue directly in the charge port, inside the magnetic tip, or on the magnetic surface of the tip. See below photos for reference. This will help prevent the magnetic tip from pulling out of the device if the device is older and the connection is already loose as well as being pulled out intentionally by curious customers or staff. **WARNING - Do not use any type of permanent glue because the tips need to be removeable for repairs and super glues can damage the charge port connection.**



Call (734) 369-6572 for questions / support